

**Architectural & Historical Report  
for  
19 New Street  
Siasconset, Massachusetts**

June 3, 2021 Revised August 9, 2023

Prepared by Marsha L. Fader, AIA Architect and  
Betsy Tyler, Historian for The 'Sconset Trust, Inc.



## THE 'SCONSET TRUST, INC.

### Preservation Easements

The 'Sconset Trust preserves the unique character of the east end of Nantucket Island in Massachusetts through conservation of areas of open land and preservation of structures of historical and architectural significance in 'Sconset. The Trust works with the entire island community and collaborates with conservation and historic preservation groups to achieve its goals.

This report was prepared to highlight the important architectural and historic features of this house. The Trust hopes that emphasizing such features will encourage current and future owners of historically significant houses to preserve important interior and exterior building features for future generations. The Trust stands ready to assist homeowners in assessing the appropriateness of tools like preservation restrictions and rights of first refusal, which may include tax benefits.

For more information on how the Trust can help, please contact the Executive Director, Elizabeth G. Grubbs.

The 'Sconset Trust is a registered 501(c)(3) nonprofit. Please visit the web site at [sconsettrust.org](http://sconsettrust.org).

## TABLE OF CONTENTS

### Introduction: 'Sconset Trust, Inc. Preservation Easements

1. Summary and Project Scope	1
2. Statement of Significance	1
3. Historical Information	1
4. Architectural Information	2
4.1 Description	2
4.2 Alterations/Evolution	2
4.3 Character-Defining Features	2
4.4 Outbuildings	3
5. Property Information	3
5.1 Property Identification	3
6. Sources of Information	3
6.1 Published and Archival Resources	3
6.2 Historical Maps and Site Plan	3
6.3 Historical Photographs	12
6.4 Current Year 2021 Photographs	13
6.5 Chain of Title	19

## 1. SUMMARY AND PROJECT SCOPE

Built in the Old Historic District of Siasconset, the property at 19 New Street known as “Sherwood” in Siasconset is a contributing resource within the Nantucket Historic District, a National Historic Landmark District, which is listed in the State and National Registers of Historic Places as well as a local historic district.

The intent of this study is to present the history of the dwelling at 19 New Street and establish its architectural and cultural significance. This study includes a survey and study of the architecture, form and materials of the existing structure, a survey of historical maps and photographs of the property, an examination of the records on file at the town of Nantucket Registry of Deeds, Probate Court and Planning and Land Use Services (PLUS) records, as well as published and archival sources.

This report was prepared for The ‘Sconset Trust, Inc. by Marsha L. Fader, AIA Architect and Betsy Tyler, Historian.

## 2. STATEMENT OF SIGNIFICANCE

The house at 19 New Street is significant for its simplicity and 125 years of ownership by the Otis family. Its presence was part of the late nineteenth-century growth to the west of the early fishing village both as a residential neighborhood and as a hub of commercial and social activity with the Siasconset Union Chapel, the ‘Sconset Casino, and an ice cream parlor.

## 3. HISTORICAL INFORMATION

19 New Street: Samuel Davis Otis, c. 1883

Originally known as Jefferson Avenue, New Street was opened in the 1830s when Barker Burnell and other landowners set off the new road for the benefit of the public. Roughly parallel to Main Street, the new way diverged from Milestone Road west of Siasconset and led directly to Pump Square. By 1858, when H.F. Walling drew his map of Siasconset, there were seven houses on New Street: six on the north side and one on the south side. Tracks for horse-drawn trolleys on Main Street and New Street are depicted on the 1881 *Bird’s Eye View* of Siasconset. In 1886, citizens petitioned the town to formally lay out New Street and contend with the encroachment of a barn on its southeast end near Pump Square. A letter to the editor of the *Inquirer and Mirror* in 1886 pleaded the case for road improvement as “an indirect tribute to the memory of those public-spirited gentlemen, now all passed from us, who had the sagacity to see, so far in advance, the future need of it and the liberality to give the land to make it.” The elegant appeal, signed Pro Bono Publica, was perhaps witnessed by Samuel Davis Otis (1817-87), who is known to have spent the summer of 1886 at his new house.

Otis built the house at 19 New Street in Siasconset on land he purchased from Alfred Folger in the fall of 1882. The house, called “Sherwood,” remained in the possession of the Otis family for more than 125 years. Siasconset Union Chapel, located across New Street from the Otis house, was built in 1883, and it is likely that “Sherwood” was built around the same time. The ‘Sconset Casino was constructed in 1900, and the Chanticleer, originally an ice cream parlor, opened in 1910, making New Street a hub of activity in the village.

Born to Quaker parents Job and Deborah Otis in New Bedford, Samuel moved with his family to the village of Sherwood, in Cayuga County, New York when he was a child. Prominent in the Society of Friends, Job and Deborah Otis lent their name to the Otisite sect within the Quaker community.

Samuel D. Otis married Elizabeth Gorham, a Nantucket Quaker, in the Friends Meeting House on Nantucket in 1847. They settled in Sherwood, where Samuel was a prosperous farmer, but maintained a connection to Nantucket. Otis is listed in the *Inquirer and Mirror* as occupying his house in Sconset in 1886. His daughter, Elizabeth G. Otis, advertised “Sherwood” for rent in the summer of 1887, and daughter Mary A. Otis advertised it the following year. The cottage was then listed for summer rental off and on for the next several decades. Of the seven children of Samuel and Elizabeth Otis, only two married and had children: Stephen (1850-1922) who married Marianna Walmsley, and Hanna (1854-1930) who married Samuel Jacques

Brun. Descendants of those two siblings owned the house until Joy W. Otis, wife of Stephen R. Otis (great-grandson of Samuel Davis Otis and Elizabeth Otis), secured the title from her cousin Betty Suzette Shoulson, daughter of Vally P. Brun, in 1992. Joy W Otis sold the cottage to Gregory Garland in 2008. The deed of sale states that she had the “use, possession and control of the premises” since 1964.

Restoration of the house plus a renovation of the north ell was completed in 2019 by Andrew Bennett for the Greg and Heather Garland family.

## 4. ARCHITECTURAL INFORMATION

### 4.1 Description

This late 19th-century house is a 1-3/4-story, wood-framed house with its gable ridge parallel to New Street. Its high eave line defines it as being more than a 1-1/2-story because it provides greater floor space on a second floor with gable end windows and a front gable dormer. Nineteenth-century maps and photographs confirm its original form and detail with a clapboard front facade with off-center entrance door flanked by two windows on the east side and a single window west of the door. A small brick chimney is located at the gable peak.

The front portion of the house has an entry, a living room with a brick fireplace, bedroom, a bathroom, and a curved stair to the second floor. A 2019 rear addition contains a kitchen and dining area, laundry, bathroom, and side/east entry. The second floor has two bedrooms and a bathroom. The 2019 renovation added a new basement with two bedrooms, a bathroom, a living room, and utility space.

The interior includes its historic plaster, wood floors, 4-panel doors with mineral door knobs, and 6/6 window sash. Its wood curved stair to the second floor bedrooms has also been restored. A wood mantelshelf is supported on decorative cast-iron brackets above a painted brick fireplace face and natural brick hearth.

### 4.2 Alterations/Evolution

All maps consistently show a rectangular form with the same footprint, a small rear addition and an out-building.

- A hipped-roof, wood-shingled porch with painted, plain posts and decorative, curvilinear brackets was removed sometime between 1949 and 1956, when it appears penciled out on a Sanborn Map. It shows in two early photos (see photos GPN2527, p. 12 and p.13). These photos also show an unusual front door of four panels with 3-lights above and a painted, capped picket fence with gate in front. The porch, door, and fence no longer exist;
- The smaller rear portion of the house was removed with the 2019 renovation. A larger footprint was added together with a large shed dormer on the north slope of the main roof and an entry on the east side;
- A small porch was added which appears on the Sanborn map by 1923. It was re-designed and rebuilt with the 2019 renovation;
- A new foundation included a new lower level with window wells, two bedrooms, a bathroom, and living room with the 2019 renovation;
- A first floor bedroom was altered in the re-design of the bedroom and adjoining bathroom;
- Exterior shower and shed added.

### 4.3 Character-Defining Features

This house is a small house with a simple plan of rooms. As a house built and owned by a Quaker family and owned by their decendants for 125 years, it does include the following notable elements:

- the front facade is composed of elements that are both symmetrical and asymmetrical;
- a single, small gable dormer is centered on the front slope of the gable roof;
- an early, probably original front porch is symmetrically-placed except its posts do not align with the off-center front door;



- the first floor fenestration consists of an entry door, two windows to the east and one window to the west - all unevenly spaced. This asymmetrical spacing is similar to two-story, typical Nantucket Quaker homes in the Old Historic District of the town of Nantucket;
- this house has a unique form and details not duplicated in Siasconset;
- a curved staircase to the second floor.

#### 4.4 Outbuildings

All maps show a small outbuilding behind the house to the northwest. A photo shows this shed with a 6/6 window in the south gable end. See top photo p.13. Another photo shows a shed to the northeast behind the house. See photo GPN2527 p.12 . This shed does not appear on any of the Sanborn maps.

### 5. PROPERTY INFORMATION

**5.1 Property Identification:** 19 New Street, Nantucket Assessor's Map: 73.4.2 73, .17 acres, zone SOH.

At some time after 1909 and before 1923, the property lines at 19 New Street were separated from the property to the east on the Sanborn maps. The earlier maps of 1898, 1904, and 1909 do not show a division between the two properties.

### 6. SOURCES OF INFORMATION

#### 6.1 Published and Archival Resources

*Inquirer and Mirror:*

2/11/1886: Letter to Editor, signed Pro Bono Publico

8/19/1886: Ye Village of Siasconset and the Stranger That is Within Its Gate: list of summer visitors

8/6/1887: To Rent, a two-story cottage, opposite the chapel at Siasconset. Eliz. G. Otis, Sherwood, Cayuga County, N.Y.

11/2/1961: Obituary of Samuel Davis Otis (grandson of builder of 19 New Street)

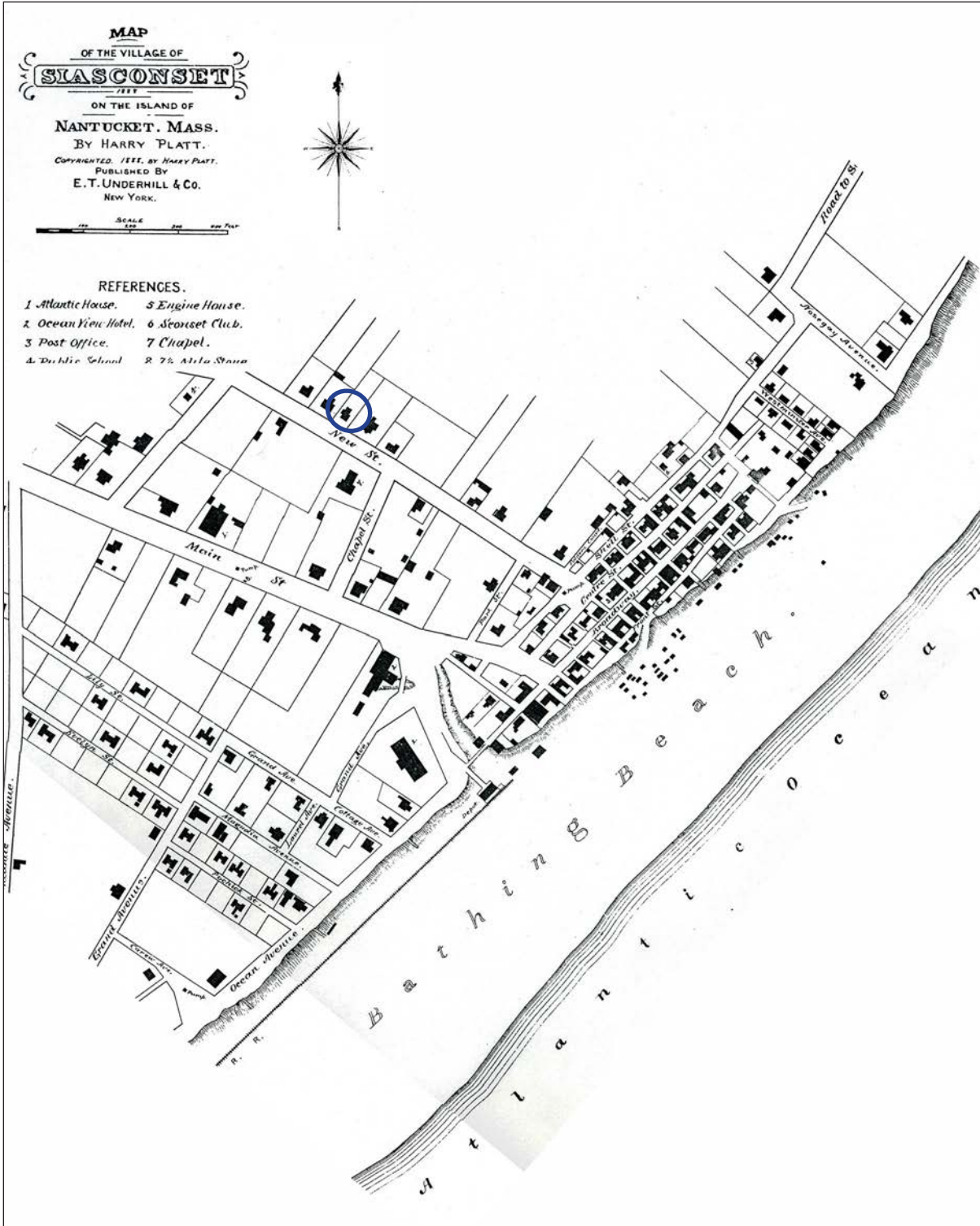
#### 6.2 Historical Maps & Plans

Platt, Harry, *Map of the Village of Siasconset on the Island of Nantucket, Mass.*, published by E. T. Underhill & Co., 1888

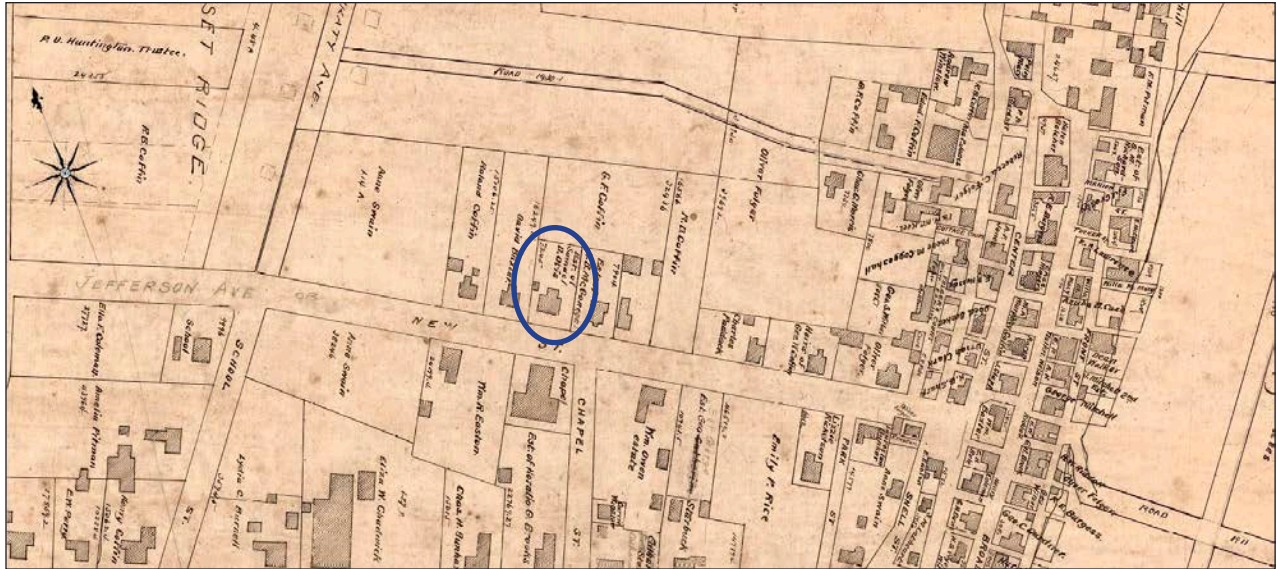
Wm. F. Codd . *Siasconset*. Compiled from the Assessor's map of 1892 by J. B. Snow and from Surveys by H. M. Waitt and Wm. F. Codd to date, 1896

Sanborn Insurance Company 1898, 1923 revised in 1949 & 1956

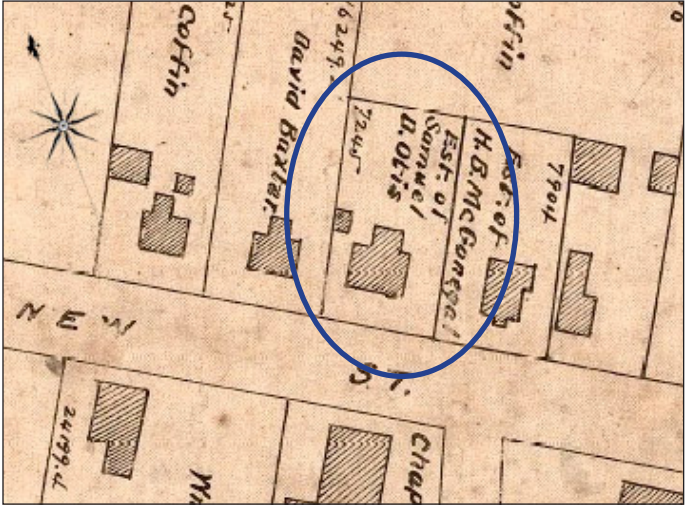
Building Plans, 2019 Renovation



Platt, Harry, *Map of the Village of Siasconset on the Island of Nantucket, Mass.*,  
Published by E. T. Underwood & Co., 1888

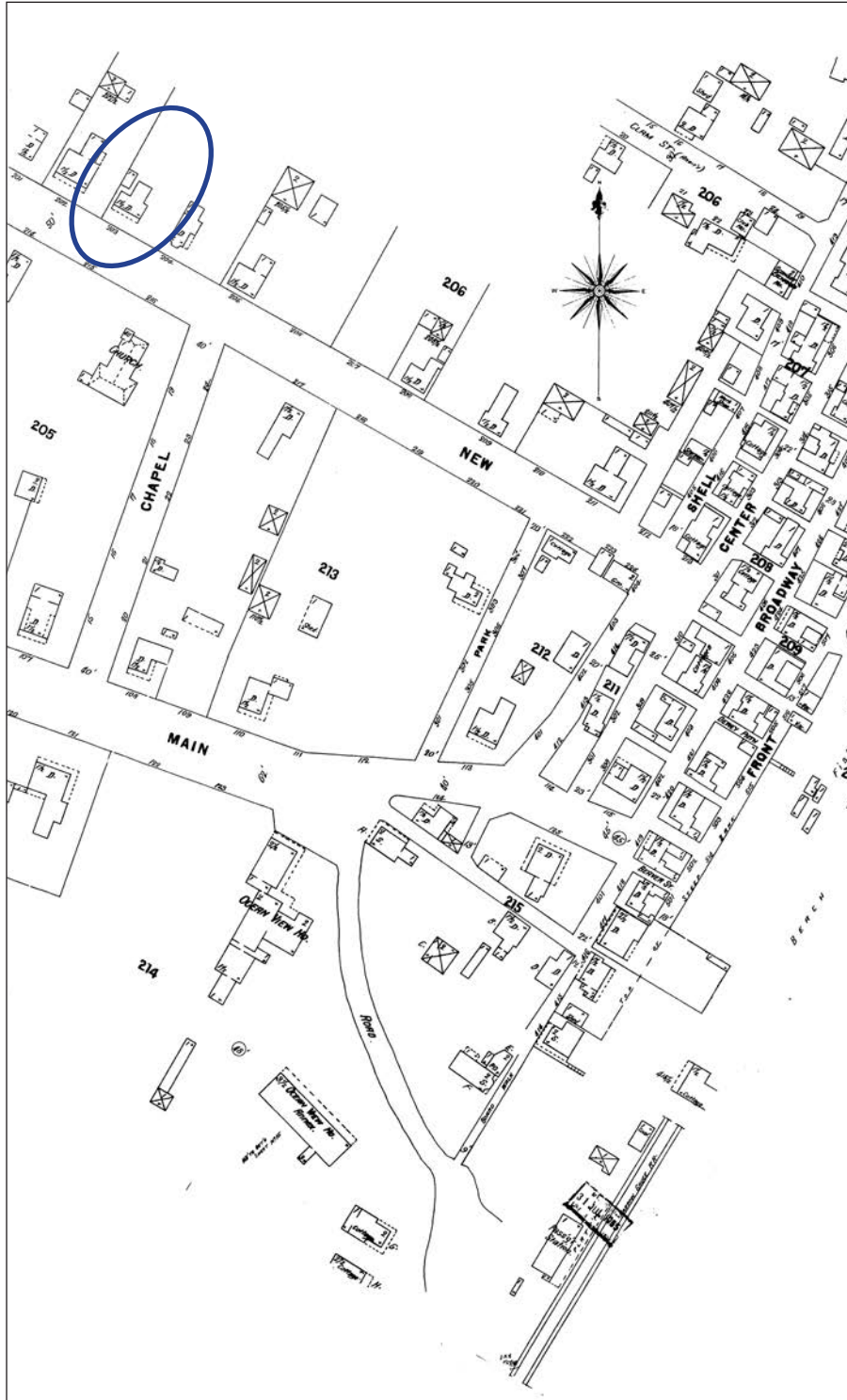


Wm. F. Codd . *Siasconset*. Compiled from the Assessor's map of 1892 by J. B. Snow and from Surveys by H. M. Waitt and Wm. F. Codd to date, 1896

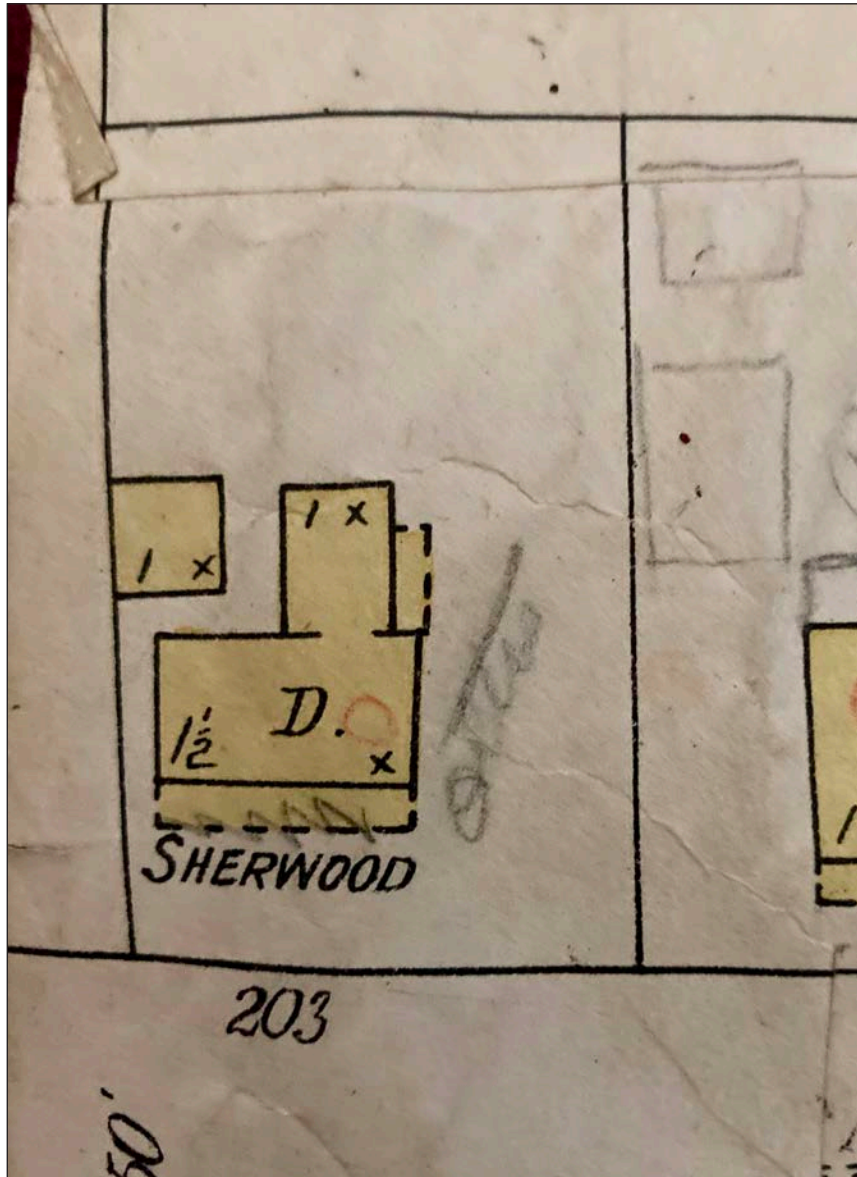


Close-up view of house from above map





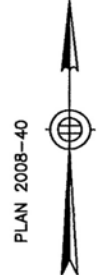
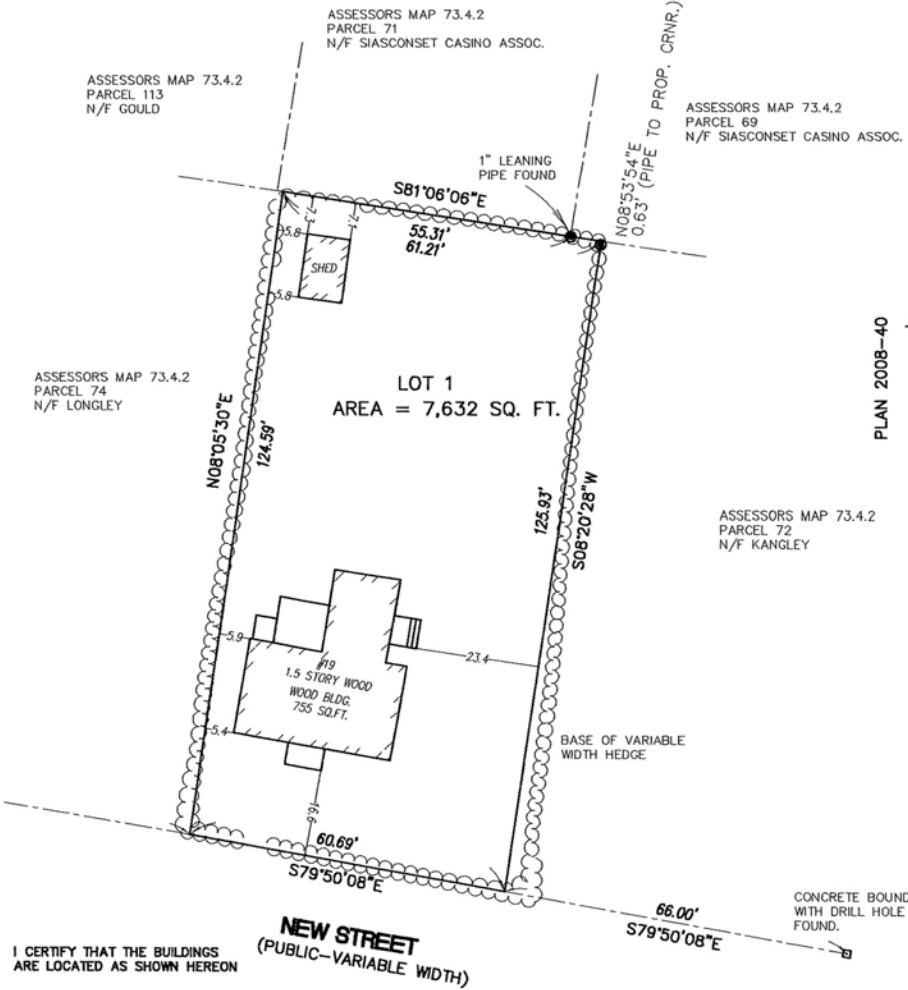
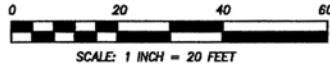
Sanborn Insurance Company map 1898



Sanborn Insurance Company map 1923 revised in 1949 & 1956.  
This map shows the removal of the front porch.

ZONING CLASSIFICATION: SOH

MINIMUM LOT SIZE = 5,000 SQ. FT.  
MINIMUM FRONTAGE = 50 FT.  
FRONT YARD SETBACK = 0 FT.  
REAR YARD SETBACK = 5 FT.  
SIDE YARD SETBACK = 5 FT.  
GROUND COVER RATIO = 50%  
EXISTING GROUND COVER RATIO = 9.9 %



I CERTIFY THAT THE BUILDINGS  
ARE LOCATED AS SHOWN HEREON

JOSEPH MARCKLINGER P.L.S.

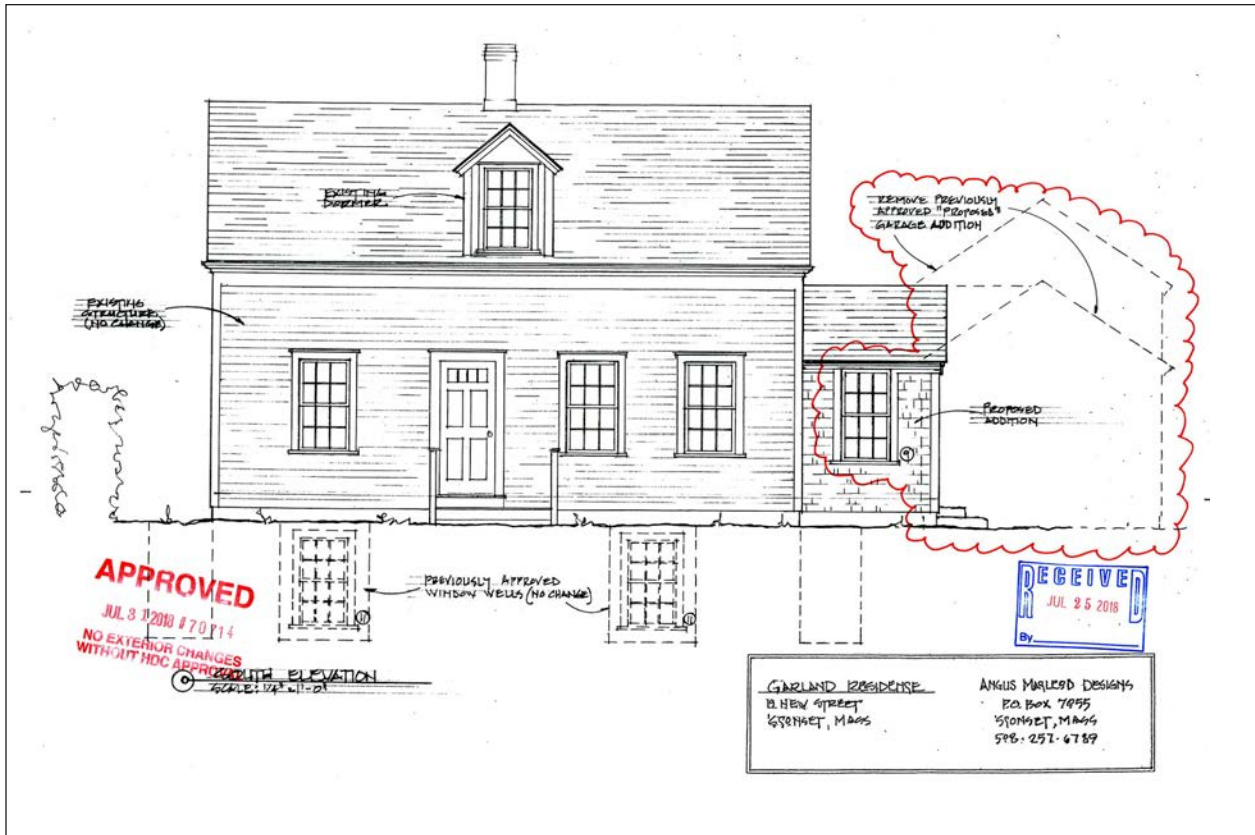
**"AS BUILT" PLOT PLAN  
NANTUCKET, MA.**

(NANTUCKET COUNTY)  
SCALE 1 IN. = 20 FT  
19 NEW STREET (SIASCONSET)  
MAY 2, 2018

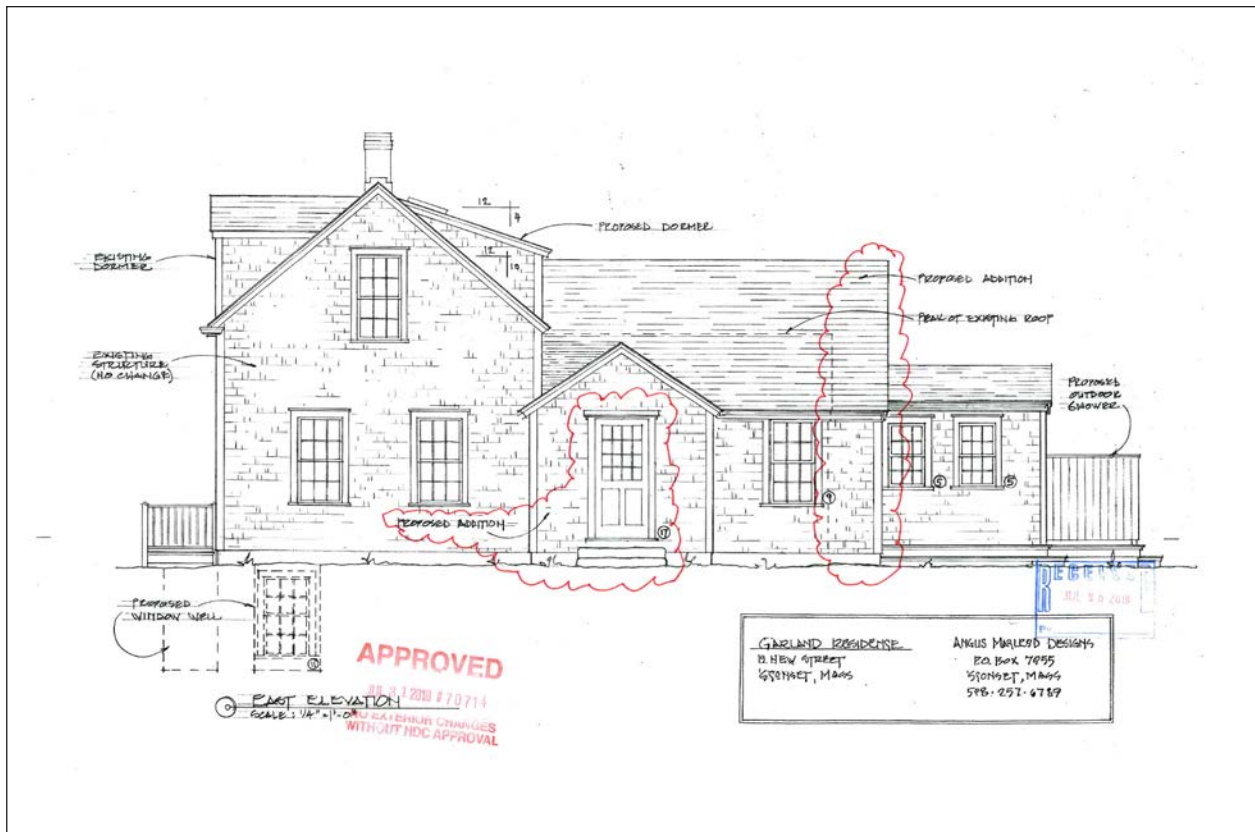
JOSEPH MARCKLINGER P.L.S.  
J. MARCKLINGER & ASSOCIATES, INC.  
PROFESSIONAL LAND SURVEYORS  
P.O. BOX 896  
NANTUCKET, MA. 02554  
(310) 945-7054

PLAN 2008-40 DEED BOOK 1181, PAGE 5  
ASSESSORS MAP 73.4.2, PARCEL 73  
OWNER : GREGORY T. GARLAND, TRUSTEE

"As Built" Plot Plan for 19 New Street, 2018

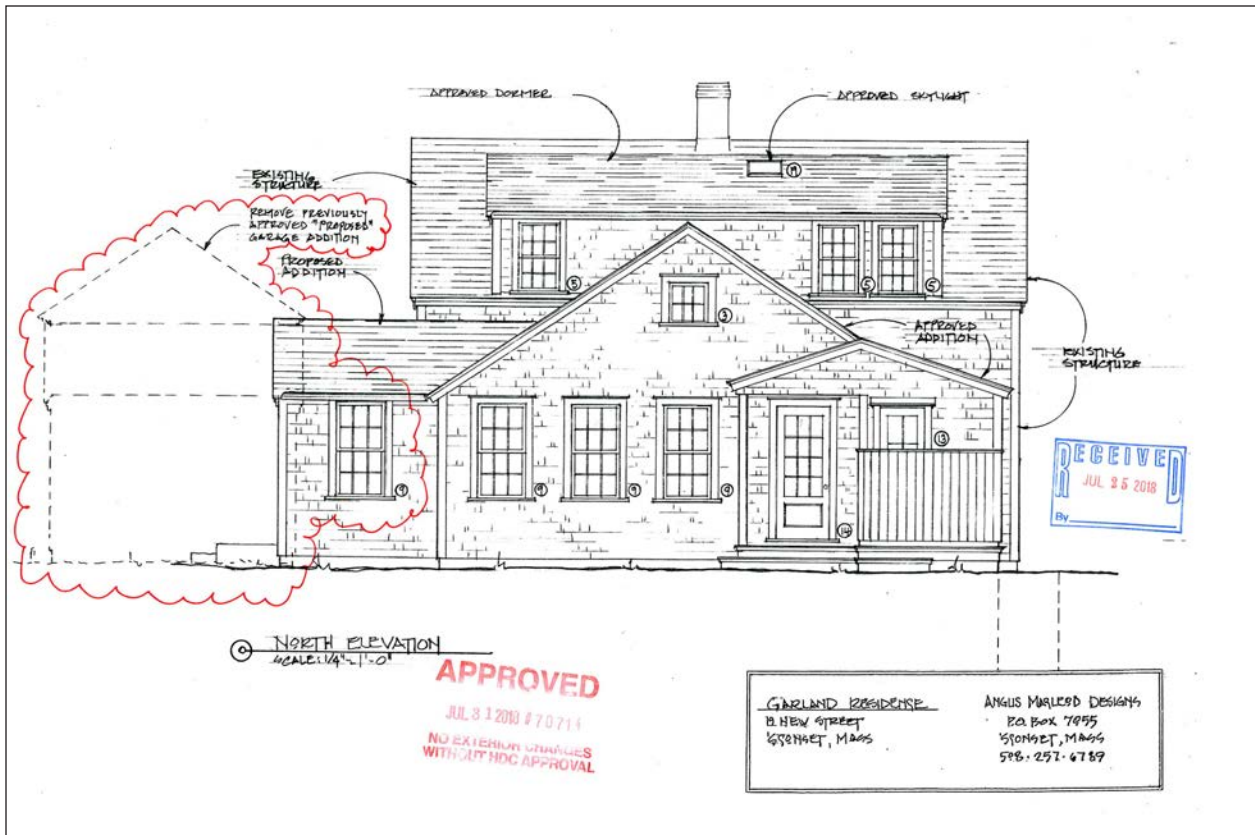


South Elevation, 2019 Renovation

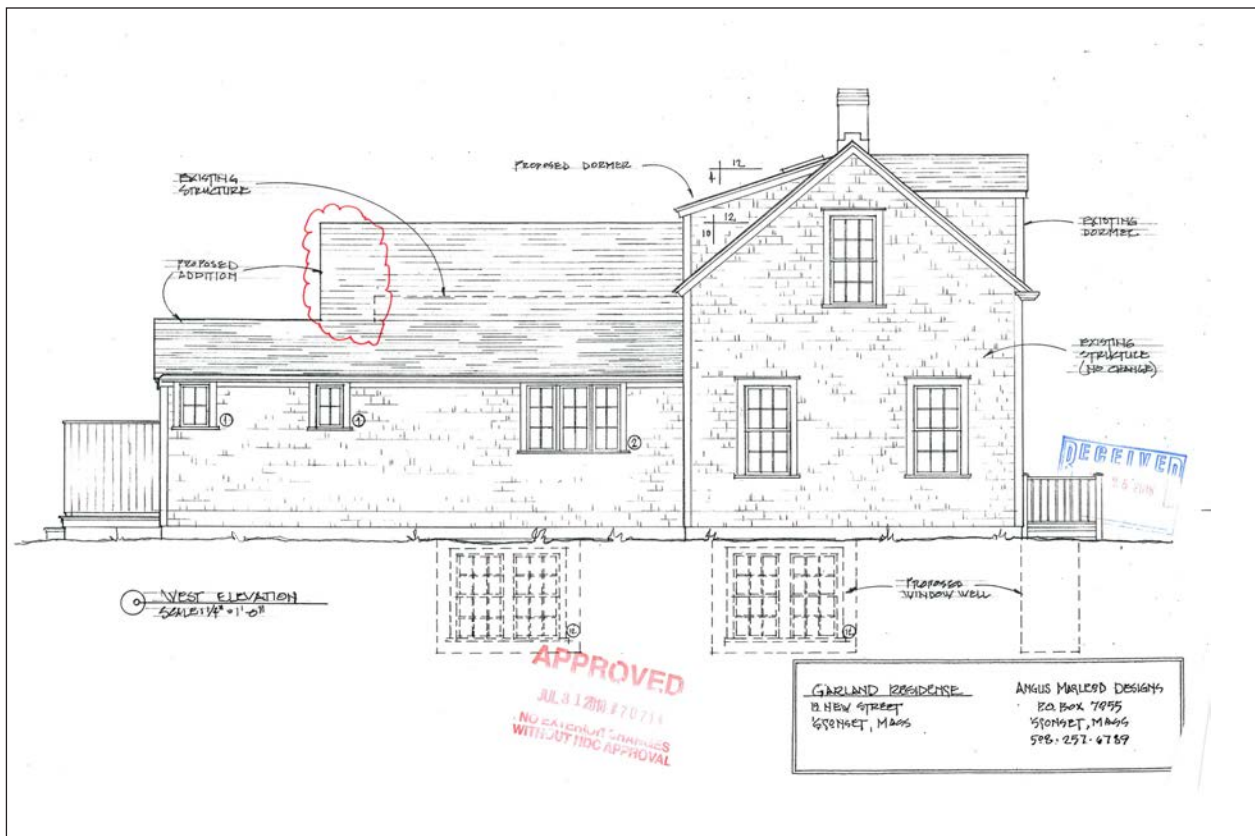


East Elevation, 2019 Renovation

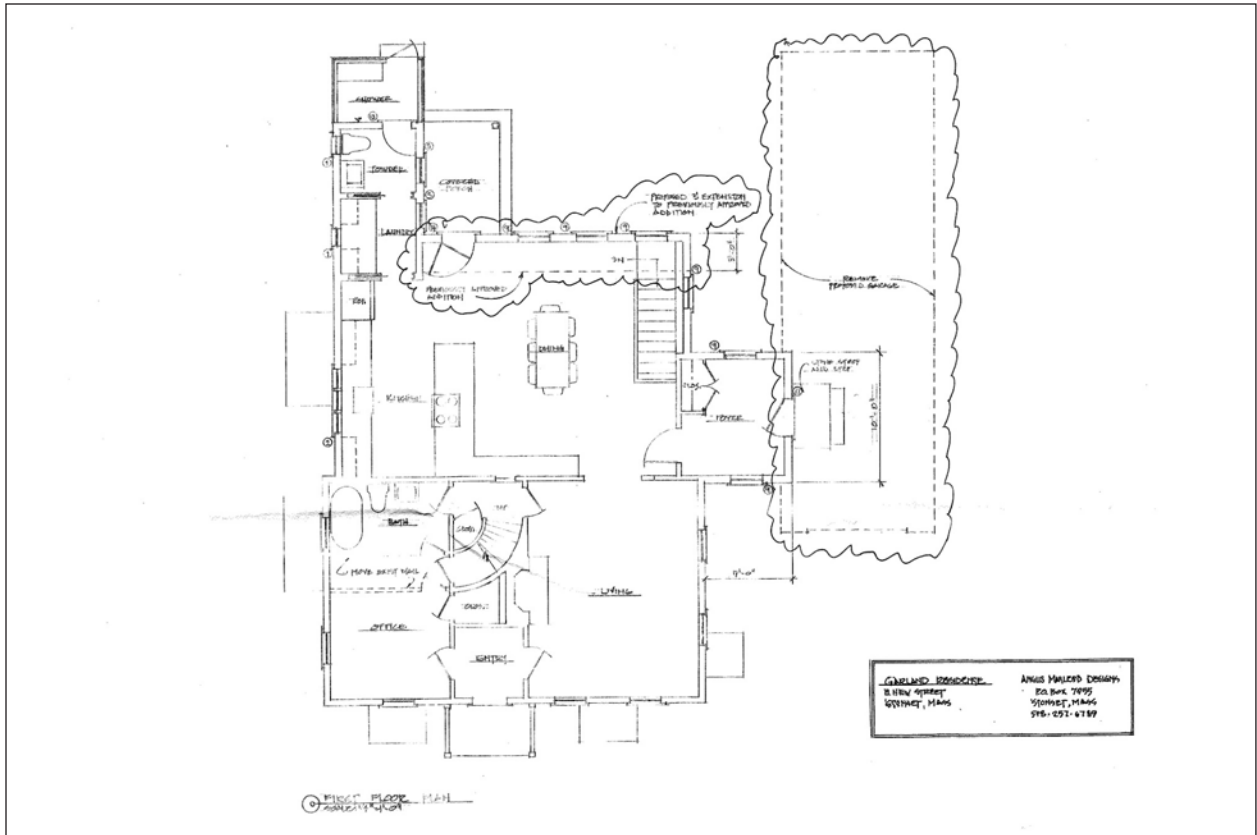




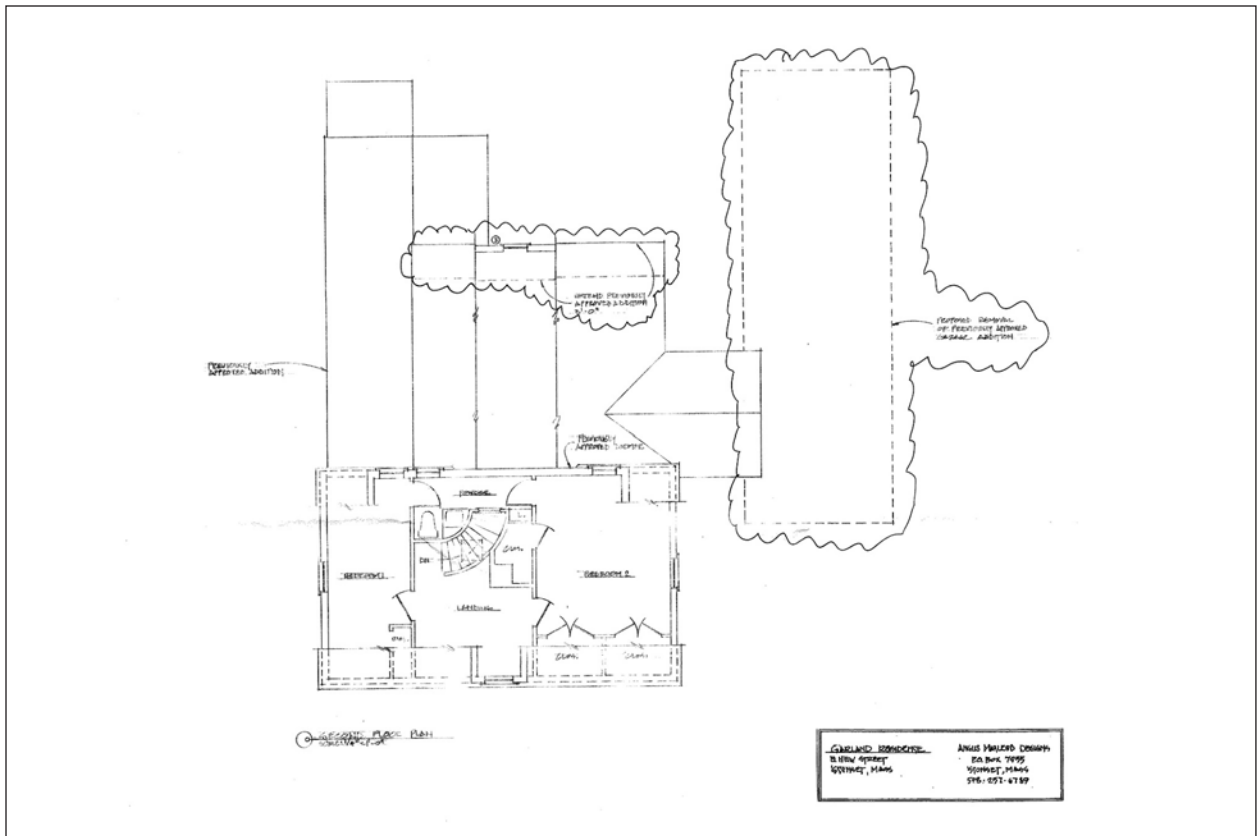
North Elevation, 2019 Renovation



West Elevation, 2019 Renovation



First Floor Plan, 2019 Renovation



Second Floor Plan, 2019 Renovation

**6.3 Historical Photographs:** Courtesy of the Nantucket Historical Association

GPN2527: Front/south facade with porch

A15-11: Looking east, third house on the left

IMG 3175: Front/south facade from Garland family collection



A15-11: Looking east, New Street is the third house on the left



GPN2527: Front/south facade with porch, late 19th Century.  
The man standing in front may be the original owner, Samuel D. Otis.





Front/south facade with porch, late 19th century

#### 6.4 Current Year 2021 Photographs



South/Street Elevation





West Gable Elevation and South Dormer



North and East Elevation





North Elevation



Living Room



Dining Room



Kitchen



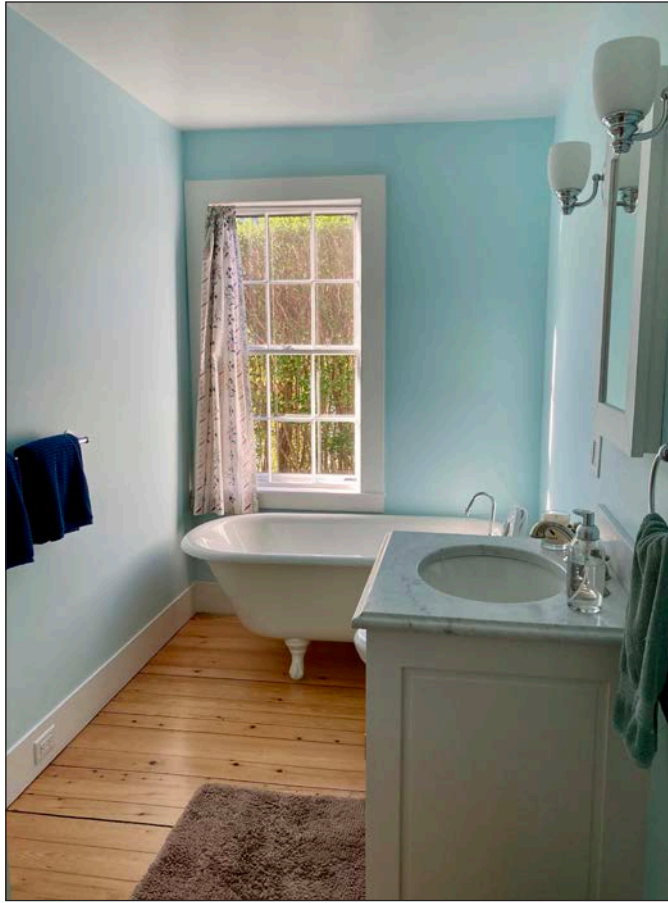


Living Room Fireplace

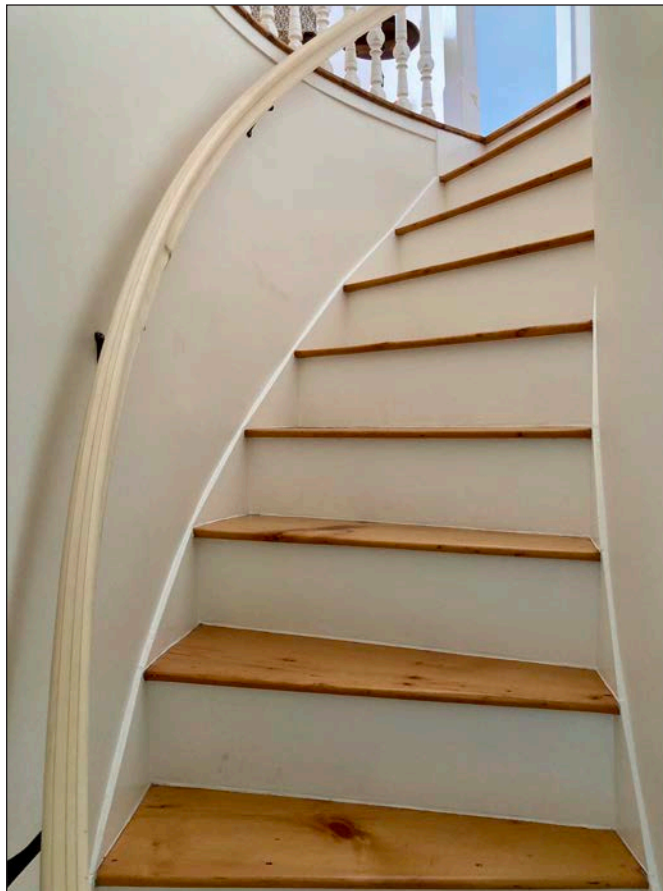


Living Room Mantelshelf Bracket





Bathroom



Curved Stair to Second Floor



Curved Stair Looking Down



East Bedroom



West Bedroom

### 6.5 Chain of Title

Nantucket Registry of Deeds Book 67/p.403: Alfred Folger to Samuel D. Otis, 1882

Nantucket Probate 322: Estate of Samuel Davis Otis, 1888?

Nantucket Registry of Deeds Book 379 Page 53: Betty Suzanne Shoulson (daughter of VP Brun, who was son of Hanna Otis and Jacques Brun. Hanna was daughter of Samuel D. Otis) to Joy W. Otis (married to Stephen R Otis, son of Samuel D. Otis of Norwalk, CT, who was son of Stephen Otis and Marianna Walmsely. Stephen Otis the elder was the son of Samuel D. Otis), 1992

Nantucket Registry of Deeds Book 1139/p.113: Joy W. Otis to Gregory Garland, 2008

Nantucket Registry of Deeds Book 1181/p.5: Gregory Garland to Gregory T. Garland Trust, 2009